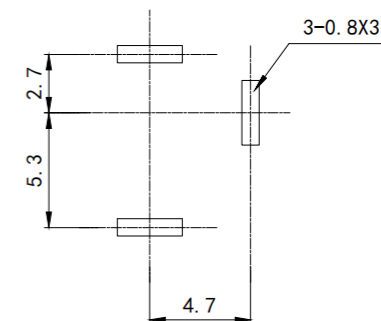
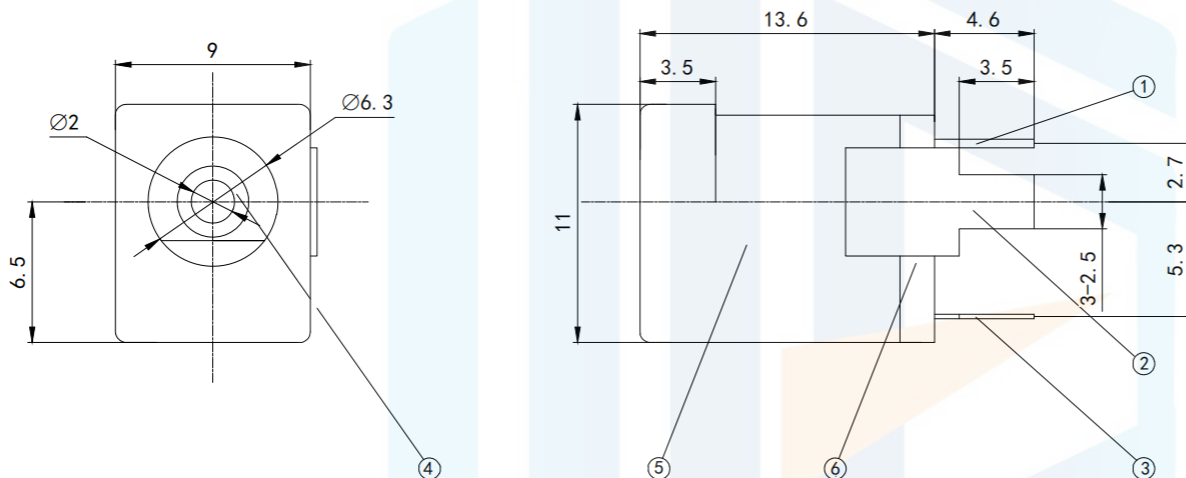
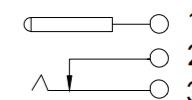


RoHS2.0
Compliant



Printed circuit
board cut-out ruler



CIRCUIT DIAGRAM

Main technical requirements:

1. No Linear Tolerance:

- 0.0-10.0mm ±0.10mm
- 10.0-20.0mm ±0.15mm
- 20.0-50.0mm ±0.20mm

2. The appearance should be good, without rust, cracks, poor electroplating and other phenomena.

Technical requirements

- 1. Rated load: DC 50V 0.2A
- 2. Contact resistance: ≤0.03 Ω
- 3. Insulation resistance: ≥100 Ω DC250V
- 4. Withstand voltage: AC 500V (50Hz)/min
- 5. Insertion force: 3~20N
- 6. Mechanical life: 5000 times

TOLERANCE X. XXX ±0.05 X. XX ±0.15 X. X ±0.20 X. ±0.30 ANGLE ±5.0°		东莞市恒祺电子科技有限公司 Dongguan Hengqi Electronic Technology Co., Ltd			
		https://www.hq-dz.com phone:15812872448			
PROTECTON 	DRAWN: CHECKED: APPROVED:	TITLE: DC电源插座		PART NO: DC-013A	
				DRAWING NO: 13.6*9*11	
		DATE: 18-10-08	UNIT: mm		
	DATE: 18-10-08	SCALE: FULL			
	DATE: 18-10-08	SIZE: A4			